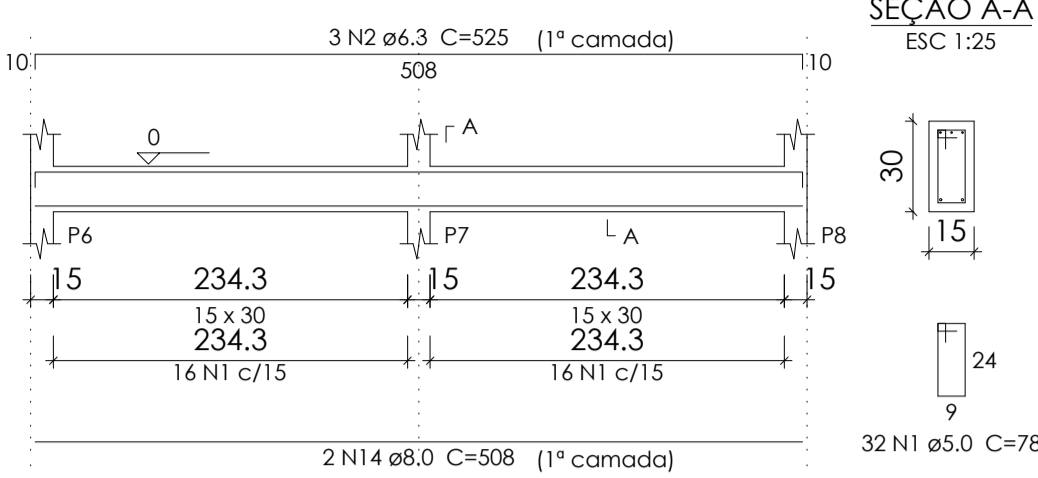
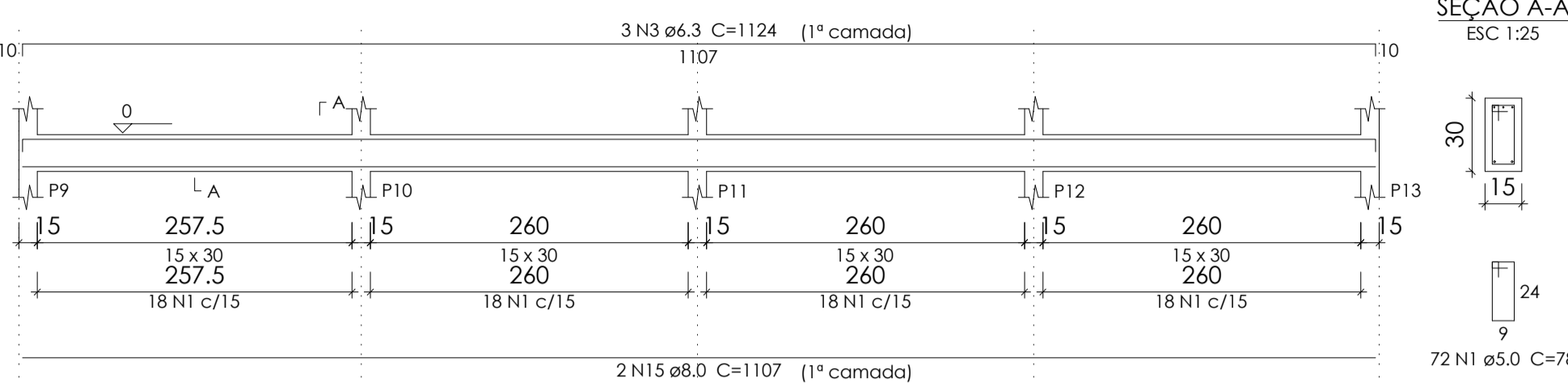


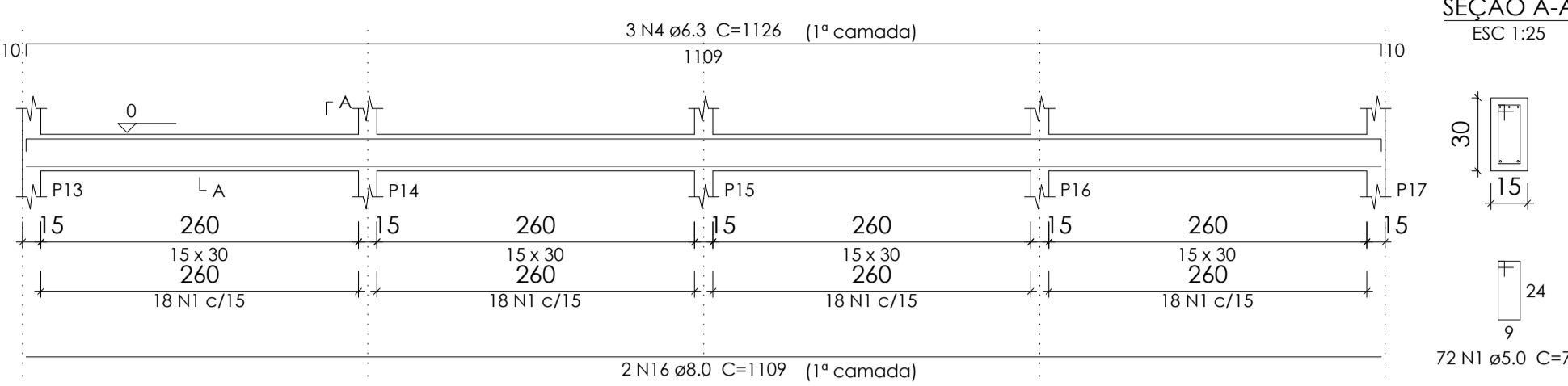
VB1
ESC 1:50



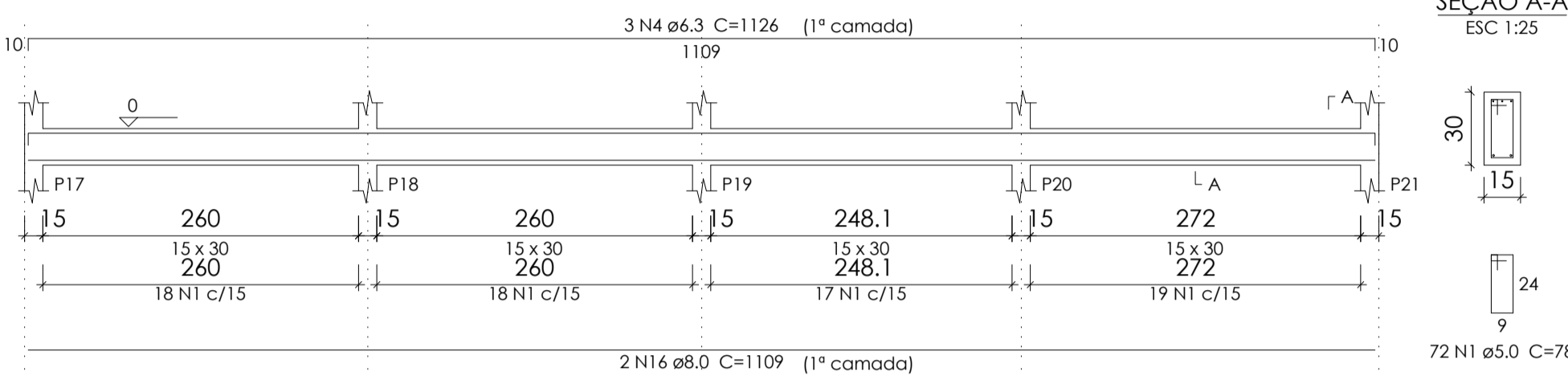
VB2
ESC 1:50



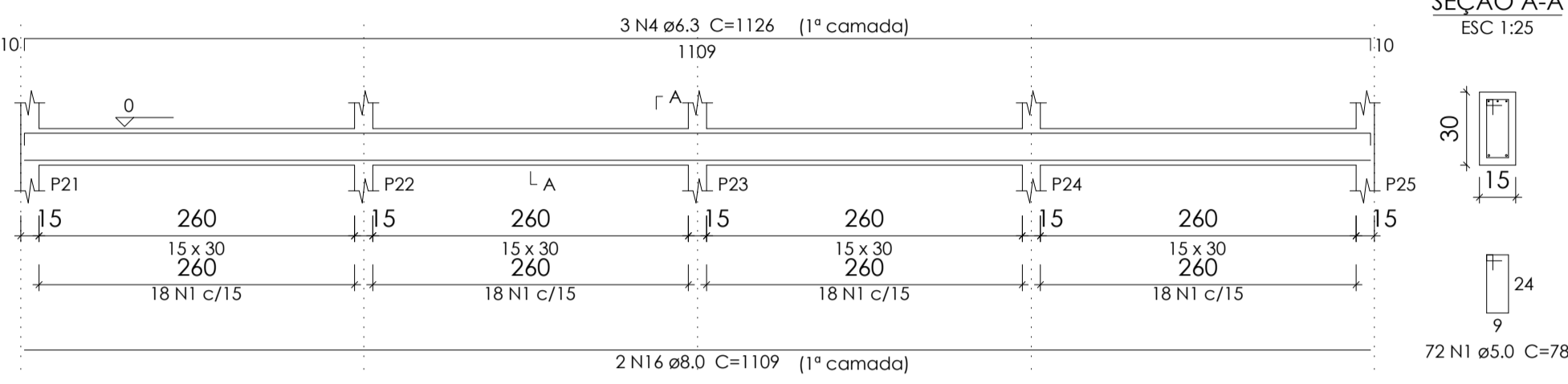
VB3
ESC 1:50



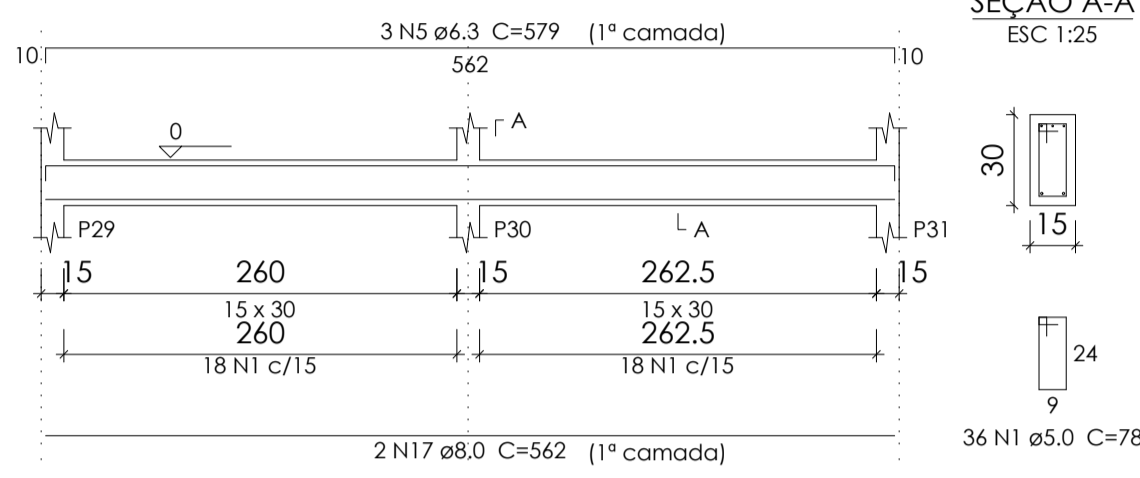
VB4
ESC 1:50



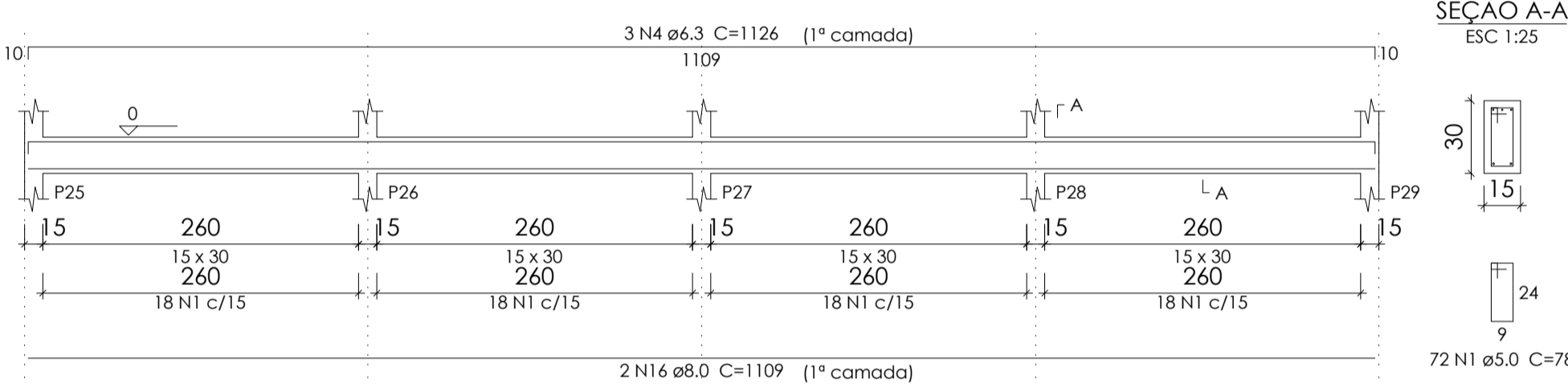
VB5
ESC 1:50



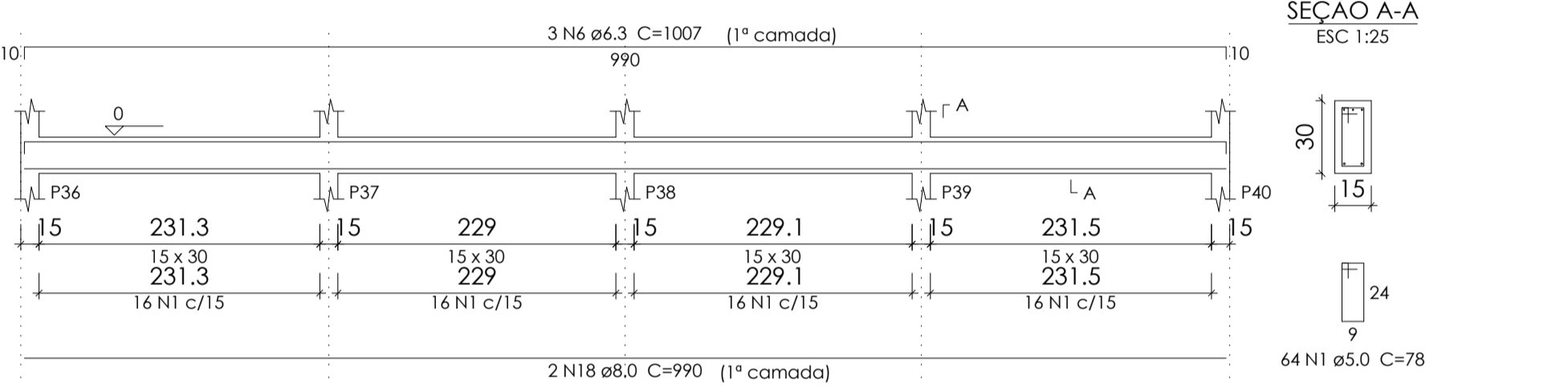
VB7
ESC 1:50



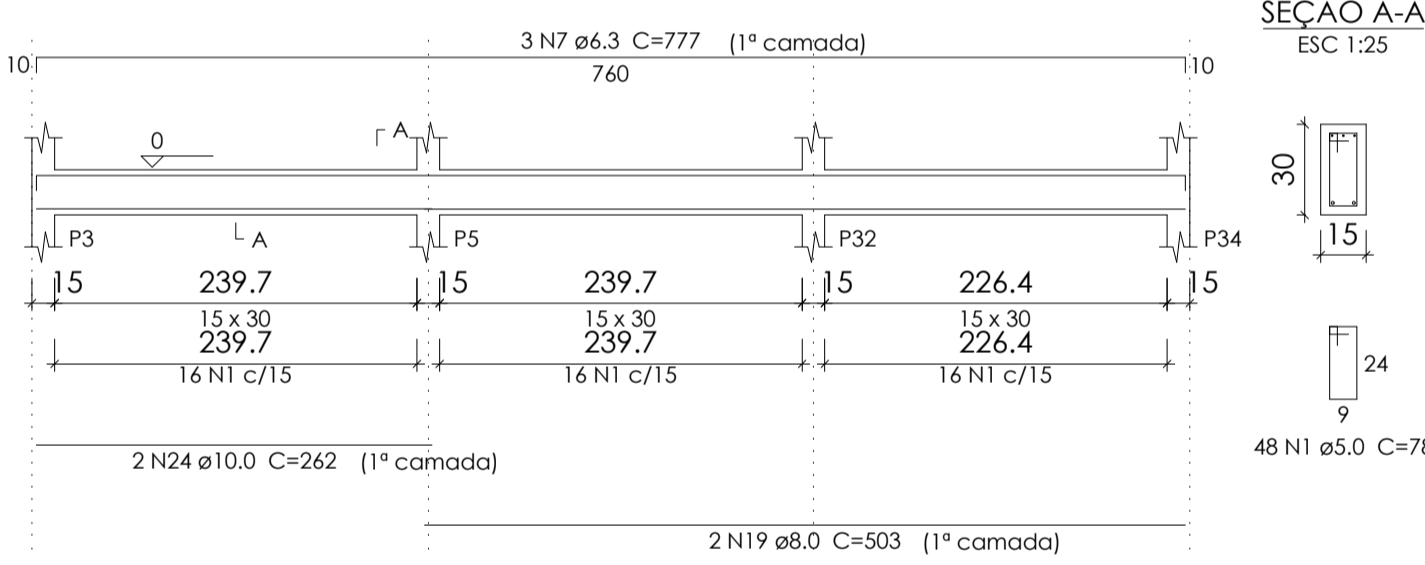
VB6
ESC 1:50



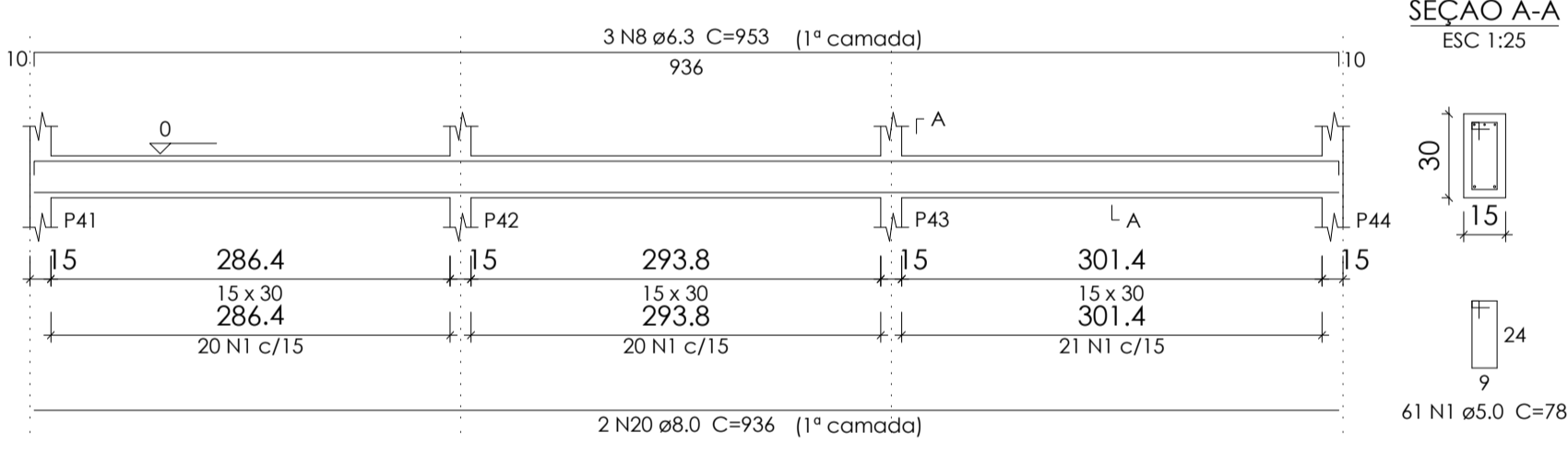
VB8
ESC 1:50



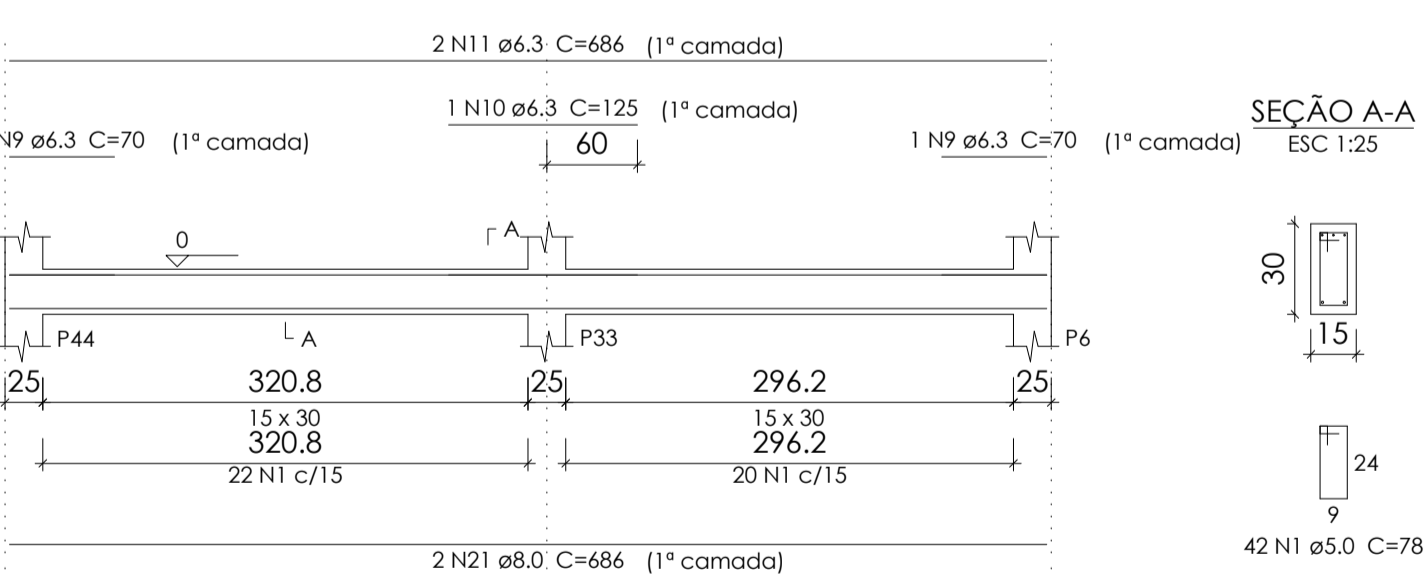
VB10
ESC 1:50



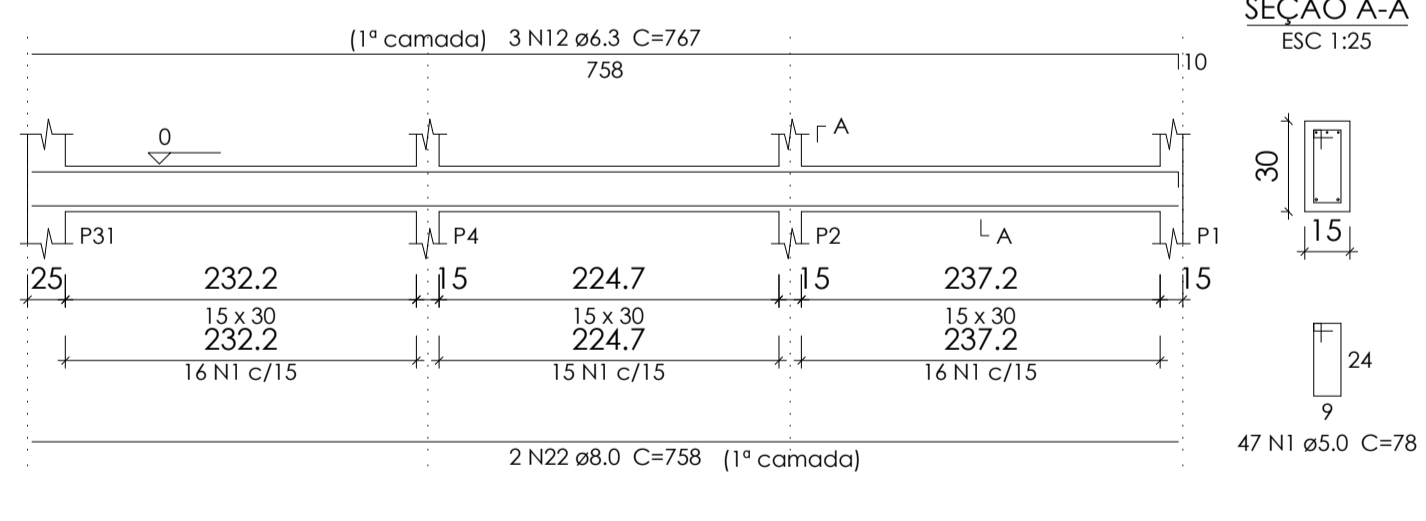
VB9
ESC 1:50



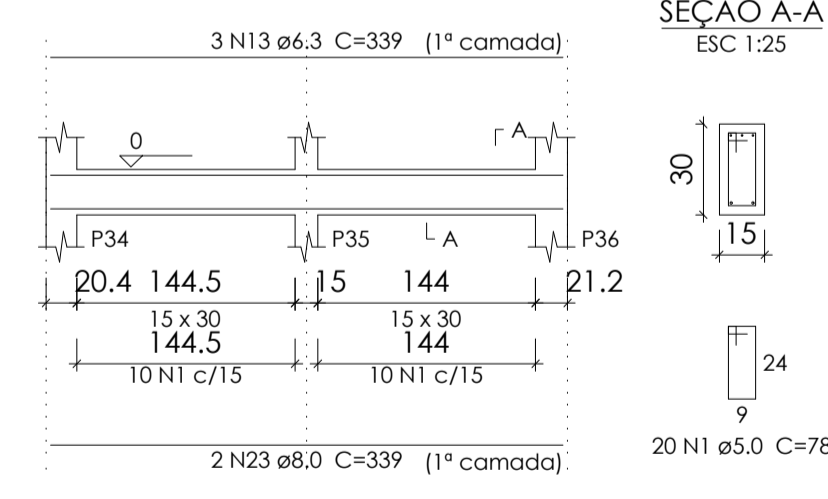
VB11
ESC 1:50



VB12
ESC 1:50



VB13
ESC 1:50



Relação do aço

AÇO	N	DIAM	Q	UNIT (cm)	C.TOTAL (cm)
CA60	1	5.0	710	78	55380
CA50	2	6.3	3	525	1575
	3	6.3	3	1124	3372
	4	6.3	12	1126	13512
	5	6.3	3	579	1737
	6	6.3	3	1007	3021
	7	6.3	3	777	2331
	8	6.3	3	953	2859
	9	6.3	2	70	140
	10	6.3	1	125	125
	11	6.3	2	686	1372
	12	6.3	3	767	2301
	13	6.3	3	339	1017
	14	8.0	2	508	1016
	15	8.0	2	1107	2214
	16	8.0	8	1109	8872
	17	8.0	2	562	1124
	18	8.0	2	990	1980
	19	8.0	2	503	1006
	20	8.0	2	936	1872
	21	8.0	2	686	1372
	22	8.0	2	758	1516
	23	8.0	2	339	678
	24	10.0	2	262	524

Resumo do aço

AÇO	DIAM	C.TOTAL (m)	PESO + 10% (kg)
CA50	6.3	333.7	89.8
	8.0	216.5	94
	10.0	5.3	3.6
CA60	5.0	553.8	93.9
PESO TOTAL			
CA50		187.3	
CA60		93.9	

Vol. de concreto total [C-25] = 5.02 m³
Área de forma total = 83.68 m²



TIPO DA OBRA:	REESTRUTURAÇÃO DA ESCOLA ESTADUAL JOSÉ ALVES BEZERRA		
PROPRIETÁRIO CPF OU CGC:	PREFEITURA MUNICIPAL DE PORTO DOS GAÚCHOS		
LOCAL E INSCRIÇÃO CADASTRAL:	Endereço: Av. Guilherme Meyer Município de Porto dos Gaúchos - MATO GROSSO		
AUTOR DO PROJETO: CREA:	Evelin Luani Montagna MT 039125		
RESPONSÁVEL TÉCNICO: CREA:	Evelin Luani Montagna MT 039125		
ESCALA: INDICADA	DATA: OUT/2019	ASSUNTO: PROJETO ESTRUTURAL: PLANTA DE ARMAÇÃO DAS VIGAS DO MURO VB1, VB2, VB3, VB5, VB6, VB7, VB8, VB9, VB10, VB11, VB12, VB13	FOLHA Nº 08/09
E S T A T I S T I C A			
ÁREAS:	% DE OCUPAÇÃO	COEF. APROVEIT.	Nº DE PISOS
VER PROJETO ARQUITETÔNICO	TÉRREO	DEMAIS PAV.	01